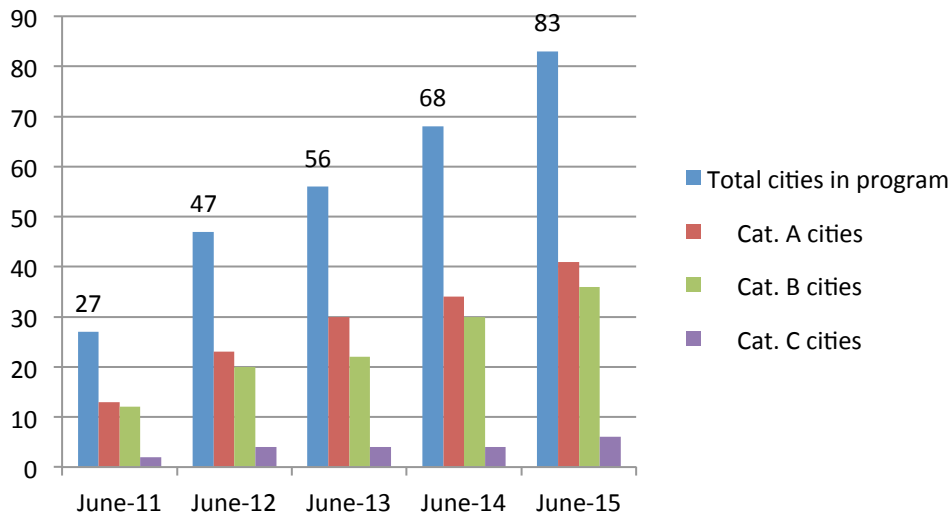
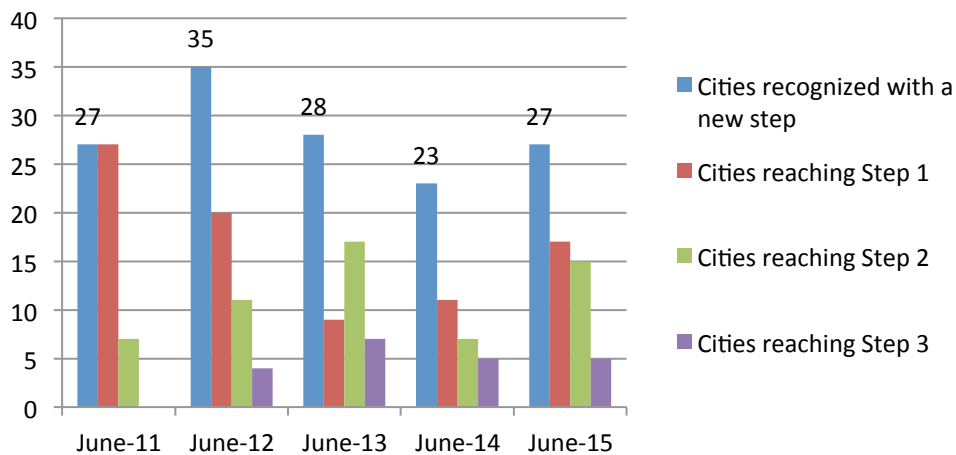


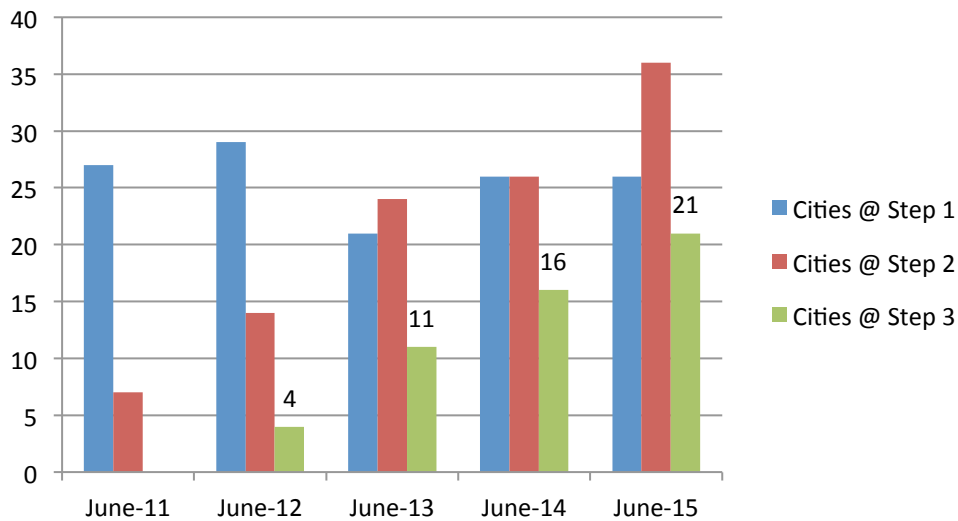
### GreenStep Cities Participation



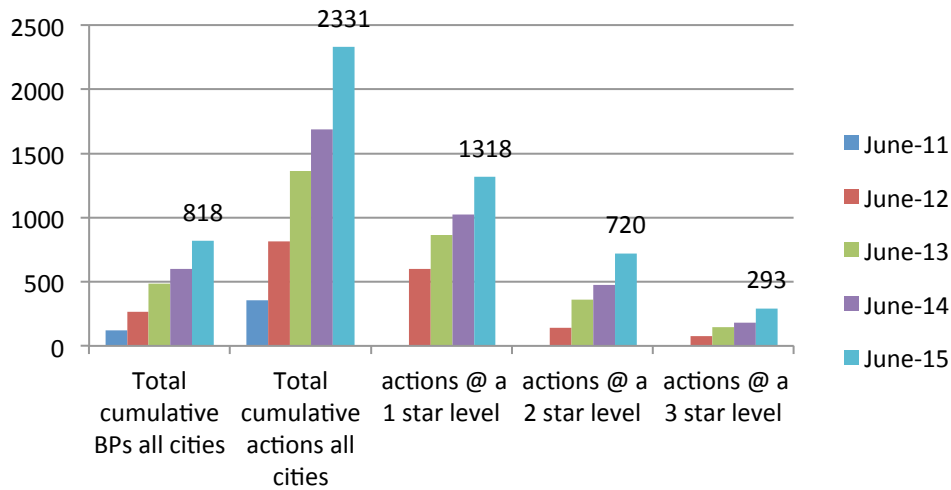
### Cities Achieving New Recognition Steps



### GreenStep Cities Recognition Status



## Best Practices & Actions Completed



		<u>2013</u>	<u>2014</u>	<u>2015</u>	
<b>Cumulative actions completed through June of each year for each Best Practice:</b>					
	<u>BP #</u>				<u>BP Name/Topic</u>
<i>Recognition minimum for Step 3 for Category A &amp; B cities</i>	<b>1</b>	103	131	174	Public buildings Private buildings
	<b>2</b>	58	73	98	New Building
	<b>3</b>	9	11	19	Lighting
	<b>4</b>	70	91	130	Building Reuse
	<b>5</b>	34	39	52	
	<b><u>Cumulative actions for 5 Building BPs &gt;&gt;&gt;</u></b>	<b>274</b>	<b>345</b>	<b>473</b>	
<i>Recognition minimum for Step 3 for all Category cities</i>	<b>6</b>	104	118	162	Comp plan
	<b>7</b>	46	53	67	Density
	<b>8</b>	72	87	109	Mixed Use
	<b>9</b>	29	34	45	Auto-Oriented Conserv.
	<b>10</b>	29	35	41	Design
	<b><u>Cumulative actions for 5 Land Use BPs &gt;&gt;&gt;</u></b>	<b>280</b>	<b>327</b>	<b>424</b>	
<i>Rec. min., Step 3, Cat. A cities</i>	<b>11</b>	54	71	114	Living Streets Mobility
<i>Rec. min., Step 3, Cat. A cities</i>	<b>12</b>	65	88	129	Options
	<b>13</b>	49	56	81	City Fleets
	<b>14</b>	11	17	19	TOD / TDM
	<b><u>Cumulative actions for 4 Trans. BPs &gt;&gt;&gt;</u></b>	<b>179</b>	<b>232</b>	<b>343</b>	
<i>Rec. min., Step 3, all Cat. cities</i>	<b>15</b>	45	62	84	Enviro Purchasing
<i>Rec. min., Step 3, Cat. A &amp; B cities</i>	<b>16</b>	76	94	135	Urban Forests
<i>Rec. min., Step 3, Cat. A cities</i>	<b>17</b>	55	72	73	Stormwater

	<b>18</b>	99	114	157	Parks & Trails
	<b>19</b>	33	44	65	Surface Water Sewer/Drink.
	<b>20</b>	31	36	57	W
	<b>21</b>	24	27	33	Septics
	<b>22</b>	40	53	77	Solid Waste Local Air
	<b>23</b>	26	29	40	Quality
<b><u>Cumulative actions for 9 Environmental BPs &gt;&gt;&gt;</u></b>		<b>429</b>	<b>531</b>	<b>721</b>	
	<i>Rec. min., Step 3, all Cat. cities</i> <b>24</b>	67	82	103	Metrics, Engage
	<i>Rec. min., Step 3, Cat. A &amp; B cities</i> <b>25</b>	46	64	84	Businesses
	<b>26</b>	39	44	59	Renewables
	<b>27</b>	47	56	83	Local Food
	<b>28</b>	4	5	6	Business Netwks
<b><u>Cumulative actions for 5 Community/Economic Development BPs &gt;&gt;&gt;</u></b>		<b>203</b>	<b>251</b>	<b>335</b>	