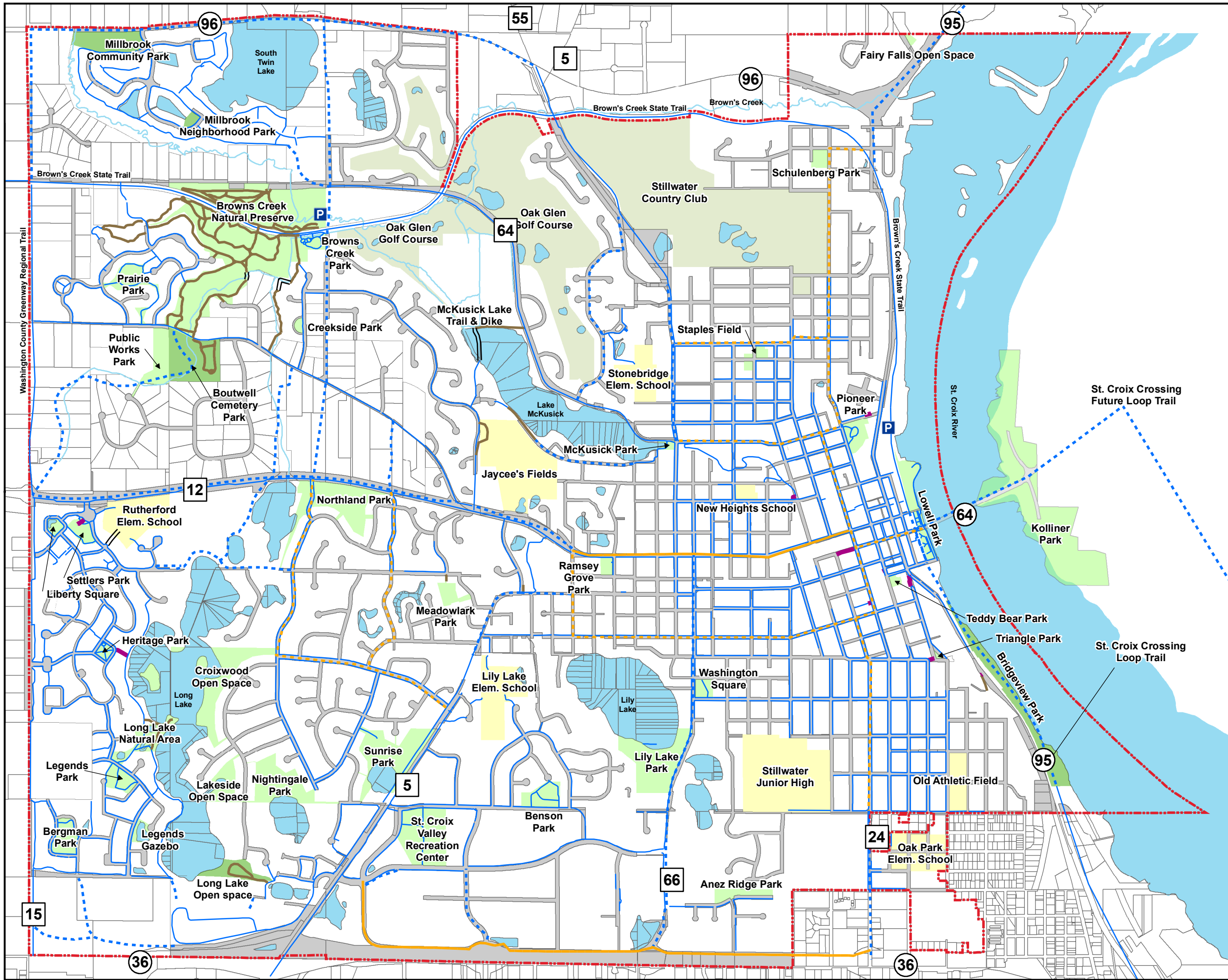


Parks and Trails Plan 2015 Update



800 0 800 1,600 Feet

- Stairs
- Bridge
- Existing Trail or Sidewalk
- Future Trail
- Natural Path
- Future Bike Lane
- Future Shared Bike Route
- 2030 City Limit
- Existing Park
- Future Parks
- Golf Course
- School Properties
- Right-of-Way
- Open Water



ST. CROIX RIVER CROSSING PROJECT

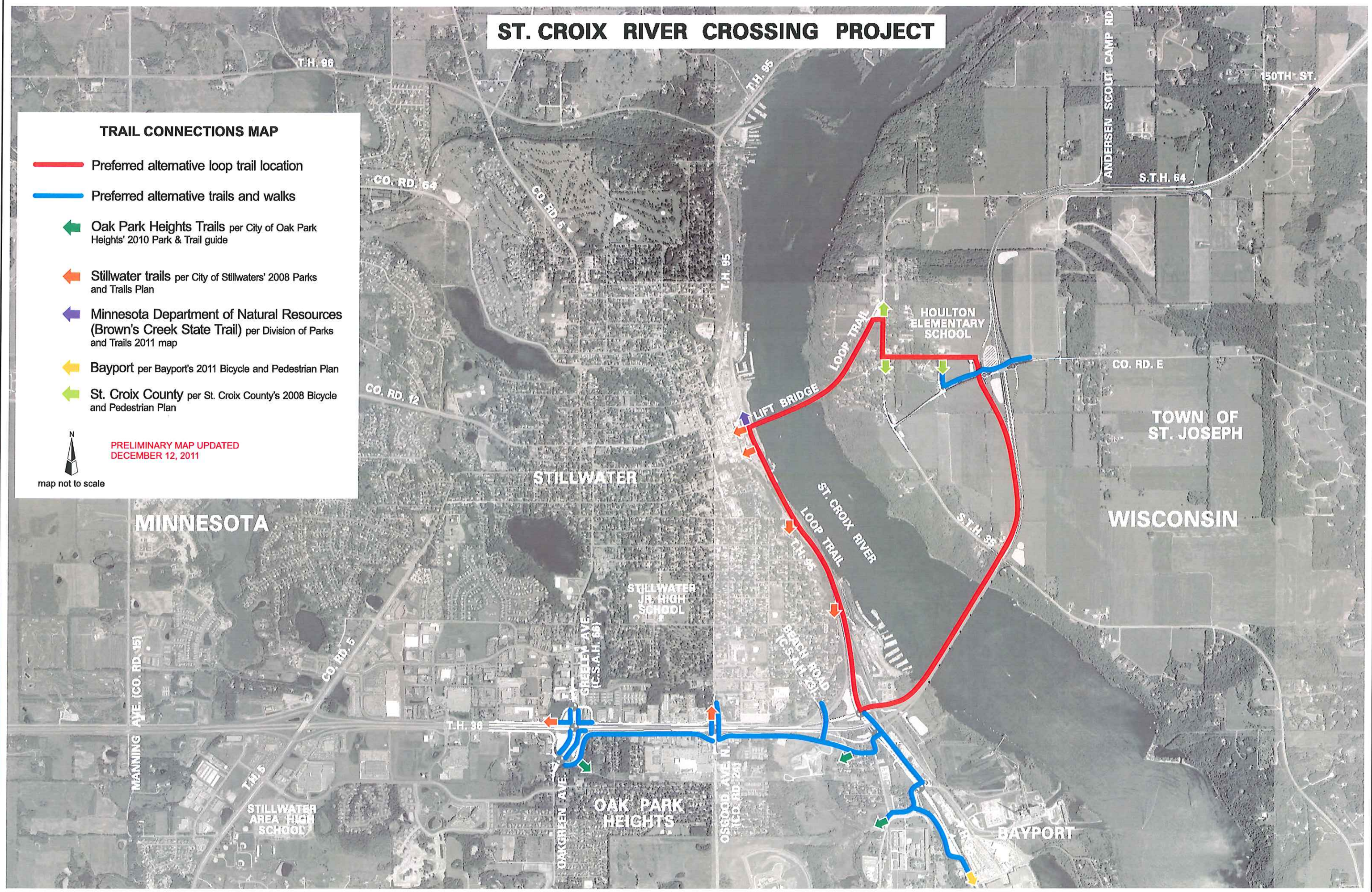
TRAIL CONNECTIONS MAP

- Preferred alternative loop trail location
- Preferred alternative trails and walks
- ← Oak Park Heights Trails per City of Oak Park Heights' 2010 Park & Trail guide
- ← Stillwater trails per City of Stillwaters' 2008 Parks and Trails Plan
- ← Minnesota Department of Natural Resources (Brown's Creek State Trail) per Division of Parks and Trails 2011 map
- ← Bayport per Bayport's 2011 Bicycle and Pedestrian Plan
- ← St. Croix County per St. Croix County's 2008 Bicycle and Pedestrian Plan



PRELIMINARY MAP UPDATED
DECEMBER 12, 2011

map not to scale



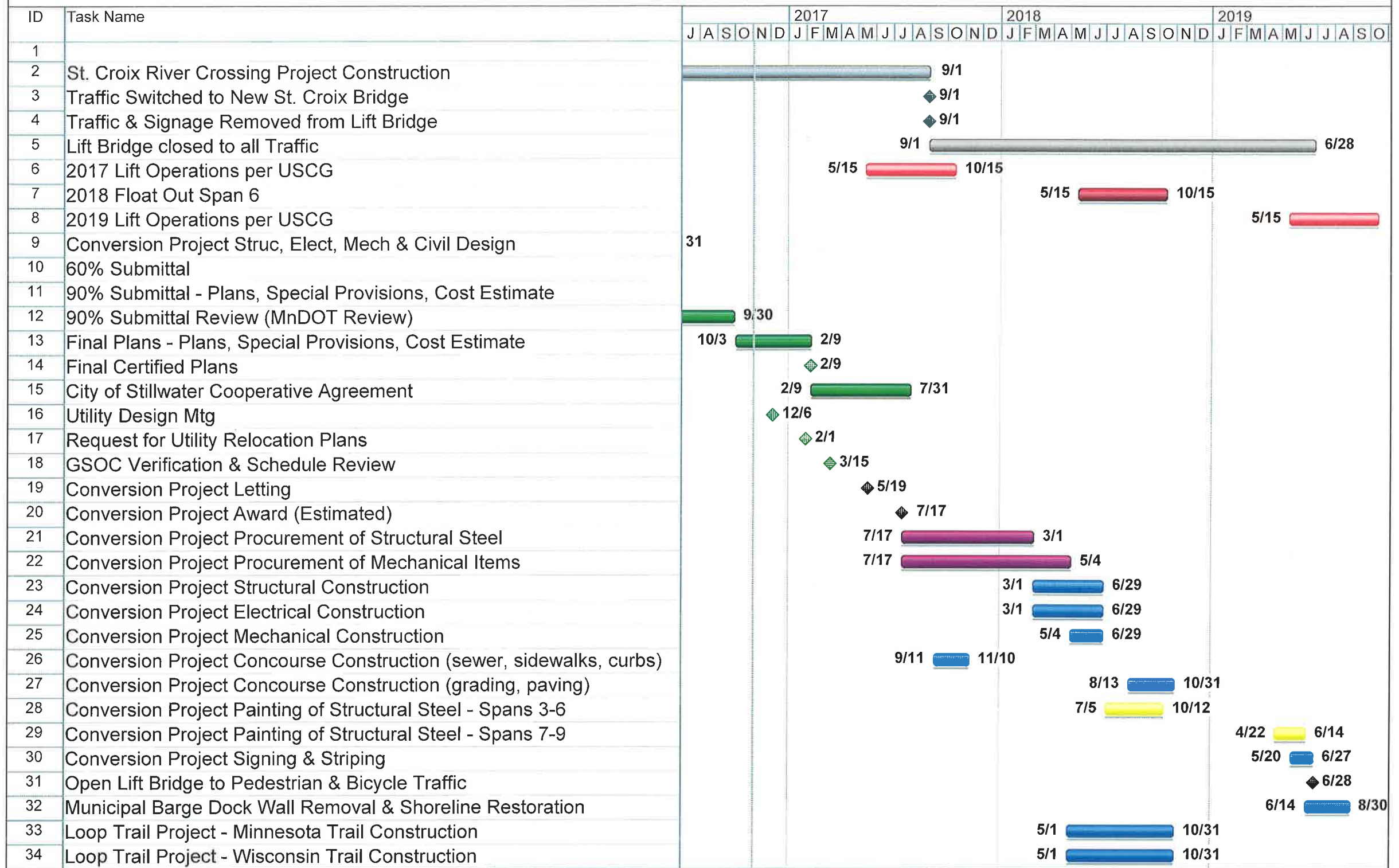


Figure 2: Map of Stillwater with updated 2030 Regional Parks System Plan changes

2030 Metropolitan Regional Parks System Plan Update

