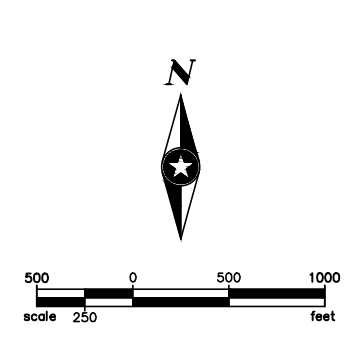
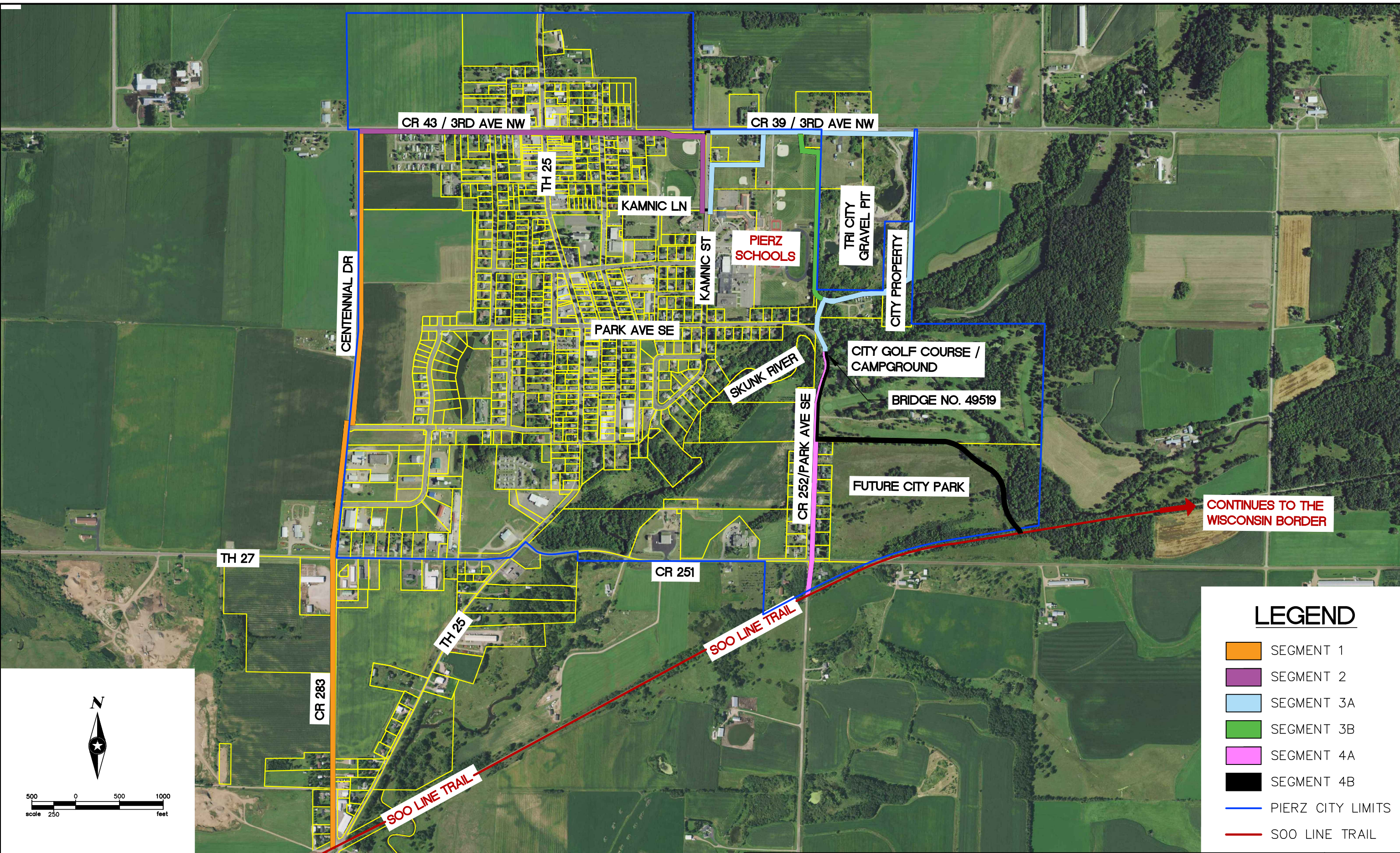


P:\PTV\PIERZ\139399-15-final-dsnp\15-final-dsnp\10-Civil\cad\dwg\Exhibits\PZ139399\TAP\_EX.dwg 1/8/2018 2:15 PM b:zdon



### LEGEND

- SEGMENT 1
- SEGMENT 2
- SEGMENT 3A
- SEGMENT 3B
- SEGMENT 4A
- SEGMENT 4B
- PIERZ CITY LIMITS
- SOO LINE TRAIL

CONTINUES TO BOWLUS, MN

CONTINUES TO THE WISCONSIN BORDER



PHONE: 320.229.4300  
1200 25TH AVENUE SOUTH  
P.O. BOX 1717  
ST. CLOUD, MN 56302-1717  
www.sehinc.com

FILE NO.  
PIERZ 144352

DATE:  
01/08/2018

CITY LIMITS  
PIERZ LOOP TRAIL  
PIERZ, MORRISON COUNTY, MINNESOTA

FIGURE NO. 2