

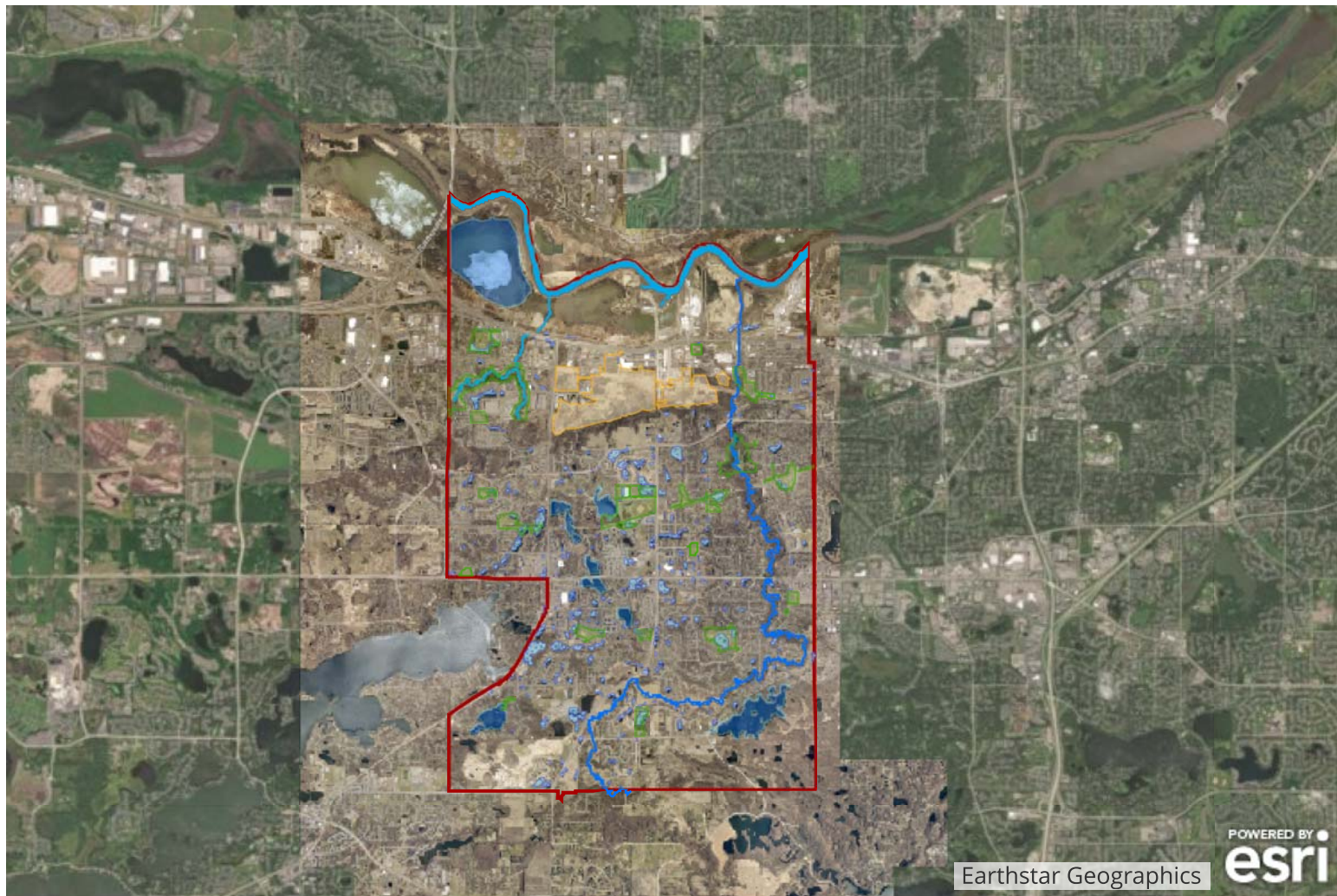
City of Savage-Natural Resources Operational Procedures

*This story was made with [Esri's Story Map Journal](#).
Read the interactive version on the web at <https://arcg.is/TC1L4>.*



Some of these spaces are currently being managed by consultants to create a native, healthy, aesthetically pleasing site, others have been left on their own. There are also spaces that we as a city manage as part of our Natural Resources. These natural areas that reside in parks, buffers, and roadsides benefit both the community and wildlife by providing places to enjoy nature and habitat.

Overview



Street Class

- COLLECTOR
- COUNTY RD
- HWY
- PRIVATE
- RESIDENTIAL

Parkland



Storm Ponds



Lakes



Eagle Creek



Credit River



Minnesota River



Fen



Savage Boundary



2018 Savage Aerial

2018 Aerial.tif

 Red: Red

 Green: Green

 Blue: Blue

Earthstar Geographics

POWERED BY
esri

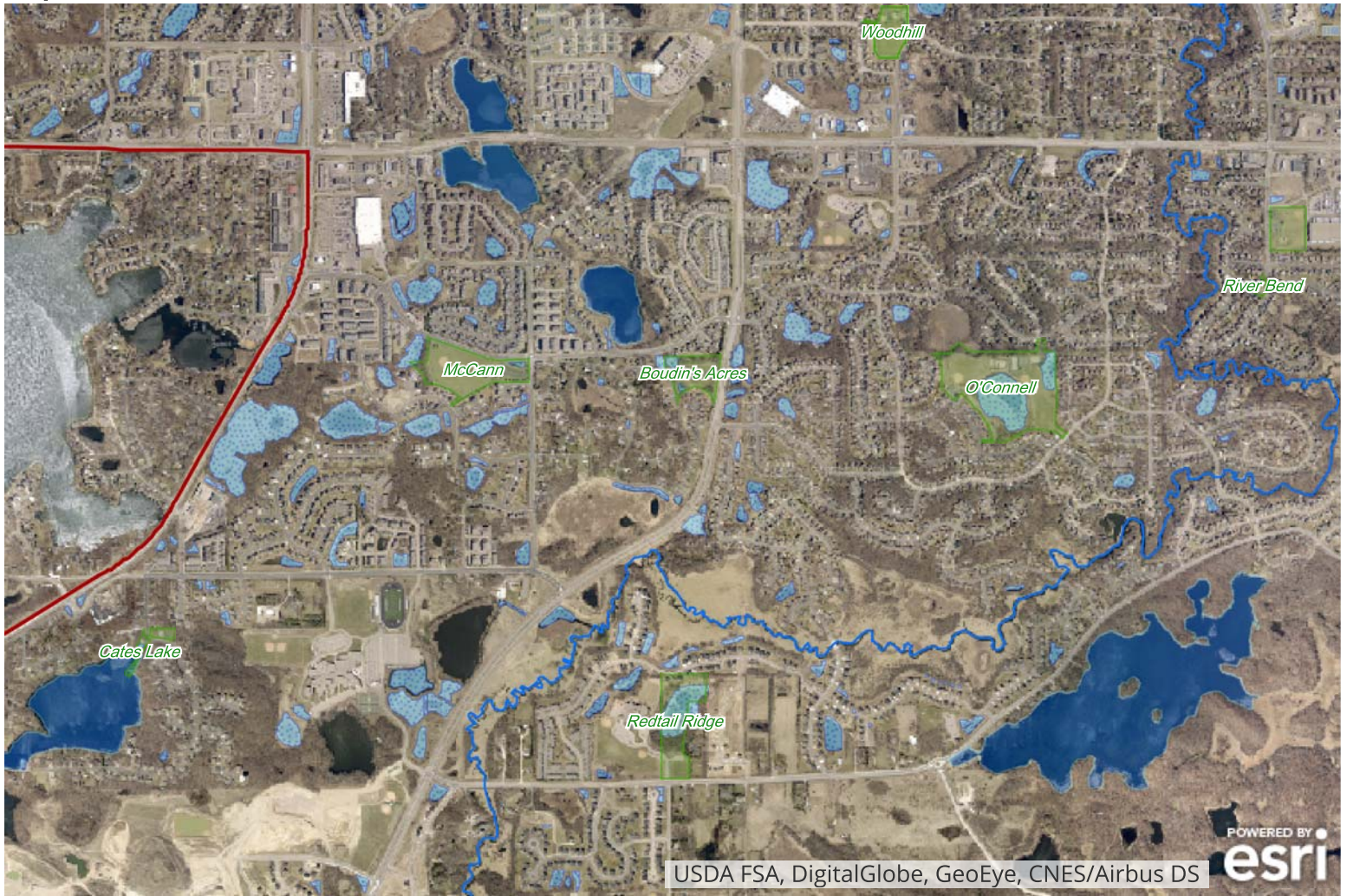
This Story map will serve as a visual aid for the updated City of Savage Natural Resource and Operational Procedures Manual.

This is also an overview of the 29 different natural resource open space sites that are managed by consultants each growing season.

We use 3 different vendors, Applied Ecological Sciences (AES), Great River Greening (GRG), and Prairie Restoration Inc. (PRI).

All three have smaller sites such as storm pond buffers and out-lots and larger sites, including Hidden Valley Remnant prairie, the ELC prairies, and the ELC rain garden area.

Operational Procedures Slides



The following slides pertain to areas of importance highlighted in the Natural Resource Operations and Procedures Manual.

The Savage Fen

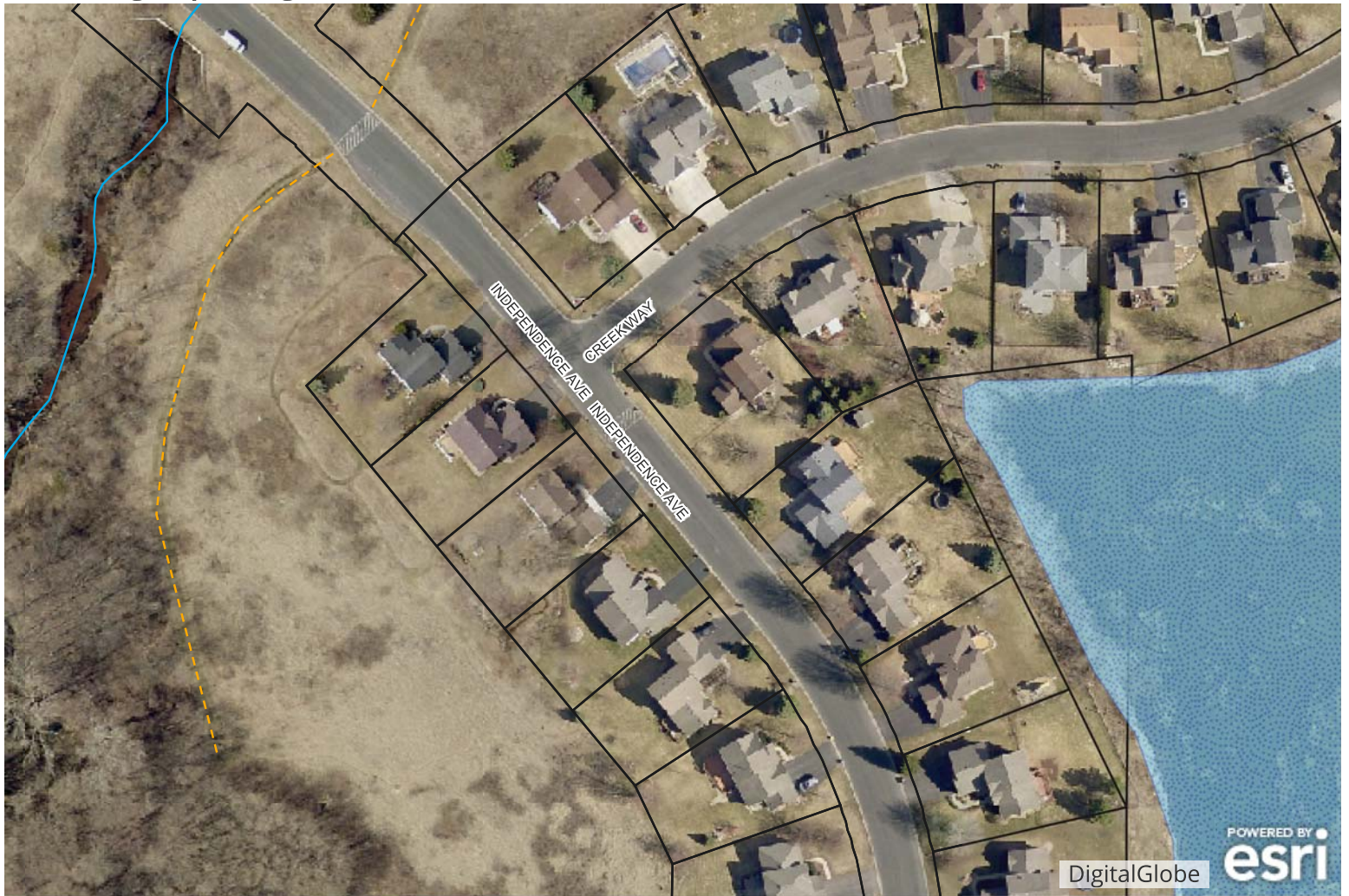




Savage Fen- Pic Credit MnDNR

- DNR
- Calcareous Fen
- 288.4 Acres
- Not managed by the City of Savage
- City staff working with the DNR to do a burn in 2019.
- Very important and rare distinctive wetland. This kind of environment supports calcium loving plants, and are typically rarer species.
- [Click Here for More Information](#)

Boiling Springs

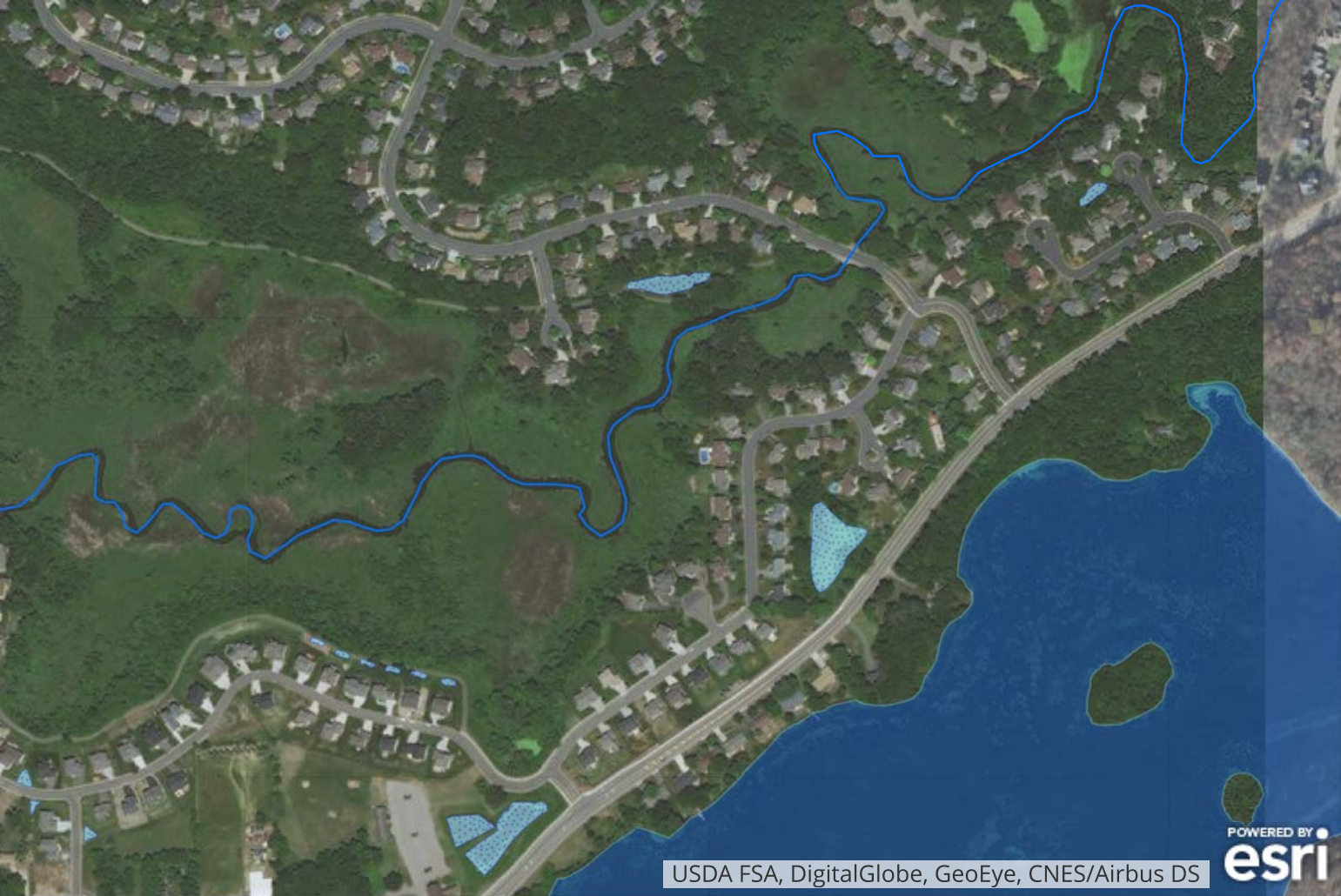


This video can be viewed in the online version of this story map

- MnDNR
- Natural fresh water spring
- 15.7 Acres= parcel size

- Area is part of DNR 200 ft. buffer around Eagle Creek

Credit River





Credit River

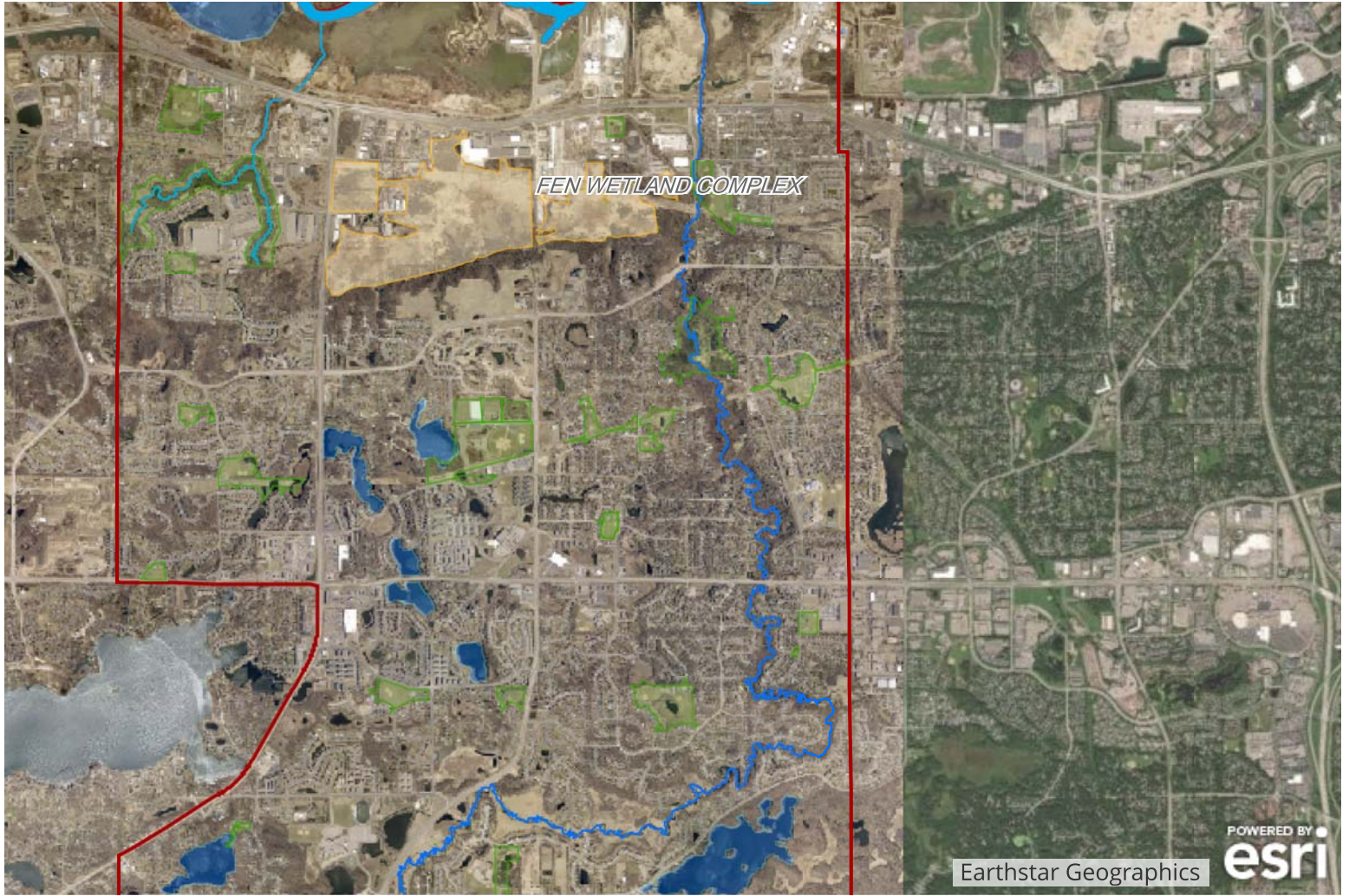
- Managed by The City of Savage, landowners and Scott County
- Total length= 22 miles.
- River is in "pretty good shape" and main action should focus on maintaining existing management, in combination with land uses in the watershed.

Eagle Creek Aquatic Management Area



- MnDNR
- Eagle Creek area
- 86 Acres
- There is a protective 200 foot buffer on both sides.

Consultant Managed Open Spaces



Name	ID	Acreage	Vendor	Cost	Resource	Funding Source	Priority
Community Park Pond (ELC)	20-18	0.41	AES	TBD	Stormwater Pond Buffer	Storm Water	
Campus Site	16-11	0.38	AES		Dry Pond	Parks	
Public Works Wetland Buffer	20-12	0.32	AES		Restored Wetland	Parks	
Station 60 Pond/ Wetland Mitigation	16-13	1.07	AES		Wetland Mitigation/Pond	Storm Water	
Credit River Water Tower	20-14	1.63	AES		Tall Grass Prairie	Parks	
ELC	20-15	0.47	AES		Tall Grass/ Seed Collection Area	Shared	
Hollywood Park	15-26	0.56	AES		Dry Pond (Stormwater Pond)	Parks	
City Hall Pond	16-27	0.13	AES		Stormwater Pond Buffer	Storm Water	
Hidden Valley Park Restoration Prairie	16-5	3.07	GRG	\$5,000	Restored Wetland	Parks	
Hidden Valley Park Rain Garden	16-28	0.11	GRG		Rain Garden	Storm Water	
McCann Park Pond	29-22	0.12	GRG		Stormwater Pond Buffer	Storm Water	
154th St. Pond	32-24	0.22	GRG		Stormwater Pond Buffer	Storm Water	
Boudin's Acres Pond	29-19	0.40	GRG		Stormwater Pond Buffer	Storm Water	
Boudin's Acres Eastern Slope Prairie	29-29	0.7	GRG		Short Grass Prairie	Parks	
Boudin's Acres Western Slope Prairie	29-30	0.14	GRG		Short Grass Prairie	Shared	
148th St. Pond	29-20	0.17	GRG		Stormwater Pond Buffer	Storm Water	
Glendale Pond	22-6	0.33	N/A	\$10,000	Stormwater Pond Buffer	N/A	
Community Park Prairie (ELC)	20-1	2.64	PRI		Tall Grass/Savanna Prairie	Parks	
Outlot A, Dufferin Park	29-2	0.74	PRI		Dry Pond	Parks	
Heatherton Ridge Park Outlot	19-3	0.60	PRI		Dry Prairie	Parks	
EC Business Park	18-4	18.74	PRI		Short Grass Native Remnant	Parks	
Canterbury Park Ponds	22-25	1.00	PRI		Tall Grass Prairie	Storm Water	
Woodhill Park	19-7	1.73	PRI		Tall grass Prairie	Parks	
South Park Dr.	28-8	0.73	PRI		Tall Grass Prairie	Parks	
O'Connell Park	28-9	0.83	PRI		Tall Grass/Mesic Prairie	Parks	
Public Works Wetland	20-10	0.68	PRI		Wetland/Tall-Mesic Prairie	Parks	
Summit Pointe Park (Prairie)	19-16	3.04	PRI		Prairie	Parks	
Summit Point Park (Stormwater Pond Buffer)	19-17	2.33	PRI		Stormwater Pond Buffer	Storm Water	
Schroeders Acres Pond	07-21	1.48	PRI		Stormwater Pond Buffer	Storm Water	

The following slides pertain to the open spaces throughout the City of Savage that are managed by consultants.

ELC Rain Garden/Tall Grass Prairie and Seed Collection Area (20-15)





Rain Garden- Aug. 2018

- AES/PRI
- Rain Garden/ Tall Grass Prairie
- 0.48 Acres
- Fall 2018 Burn
- **Condition-** Good diversity and great cover of native species. Some species have become more dominate than others, they may need managing. Some encroachment of woody species.
- **Funding-** Shared

Community Park Pond (ELC)



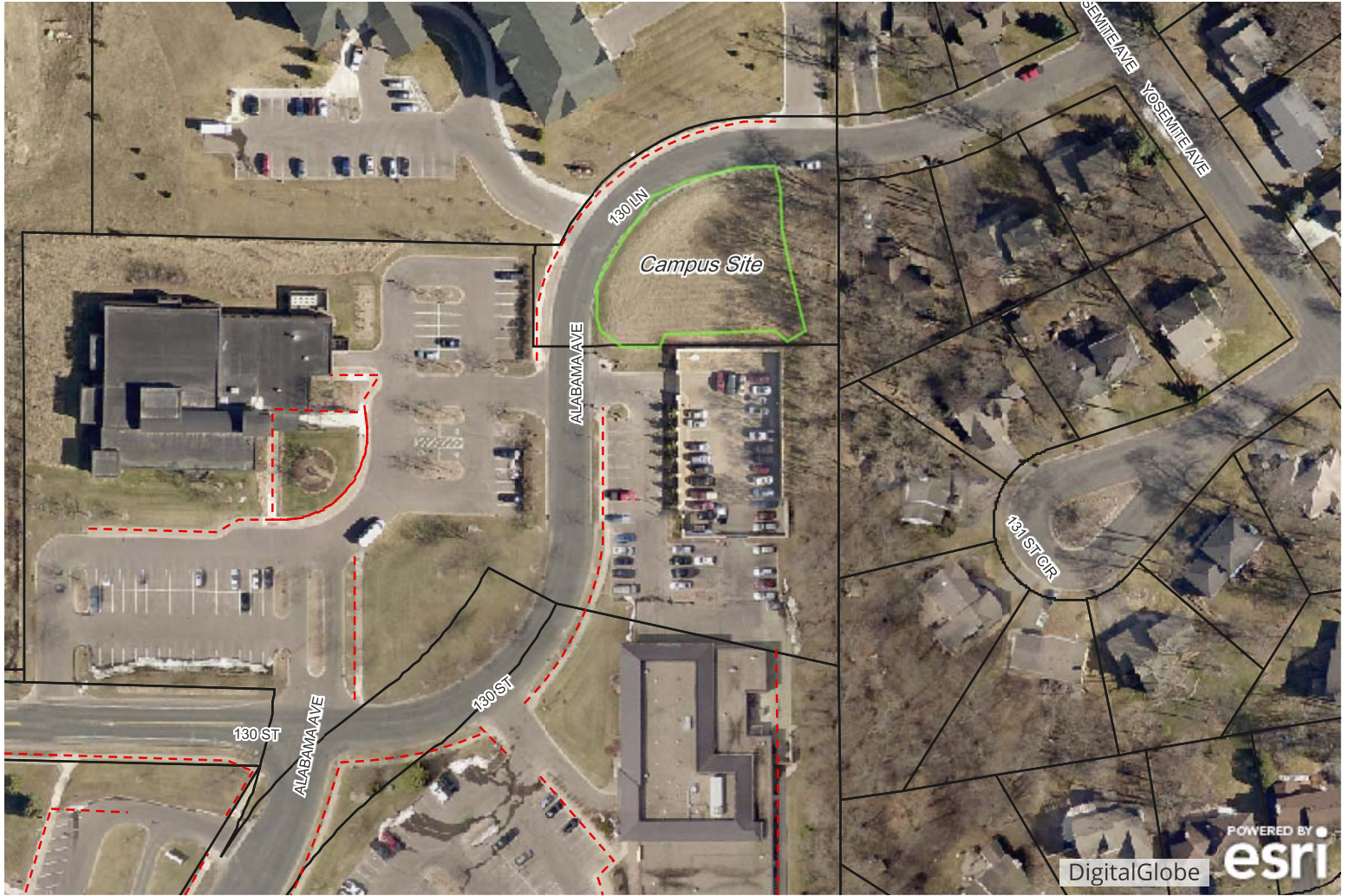
- AES
- Storm pond buffer prairie
- 0.41
- **Condition-**
- **Funding-** Storm Water

Credit River Water Tower Prairie



- AES
- Tall Grass Prairie
- 1.63 Acres
- Condition
- Funding-Utilities/Parks

City Hall Dry Pond

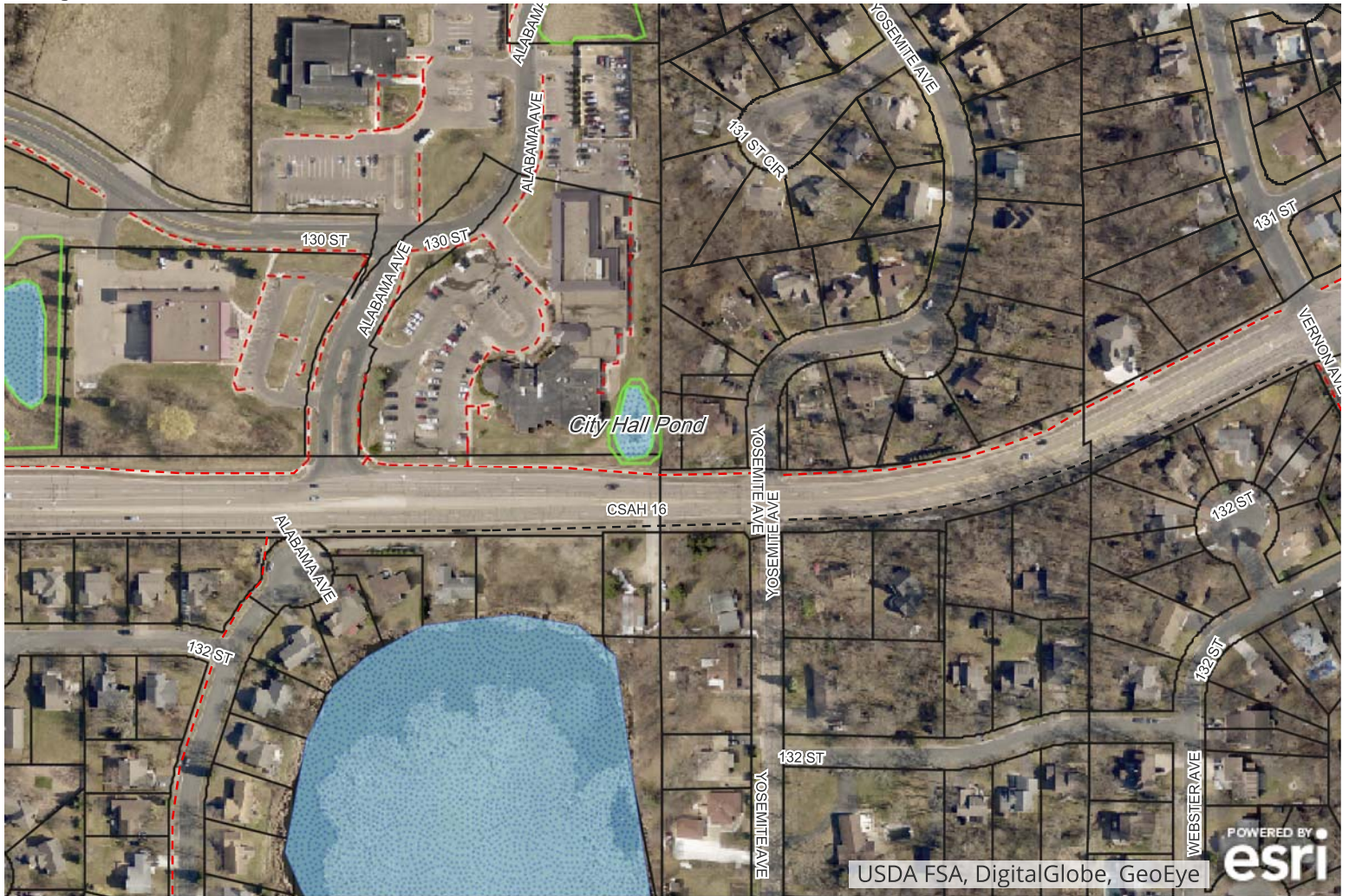




Campus Site- Aug. 2018

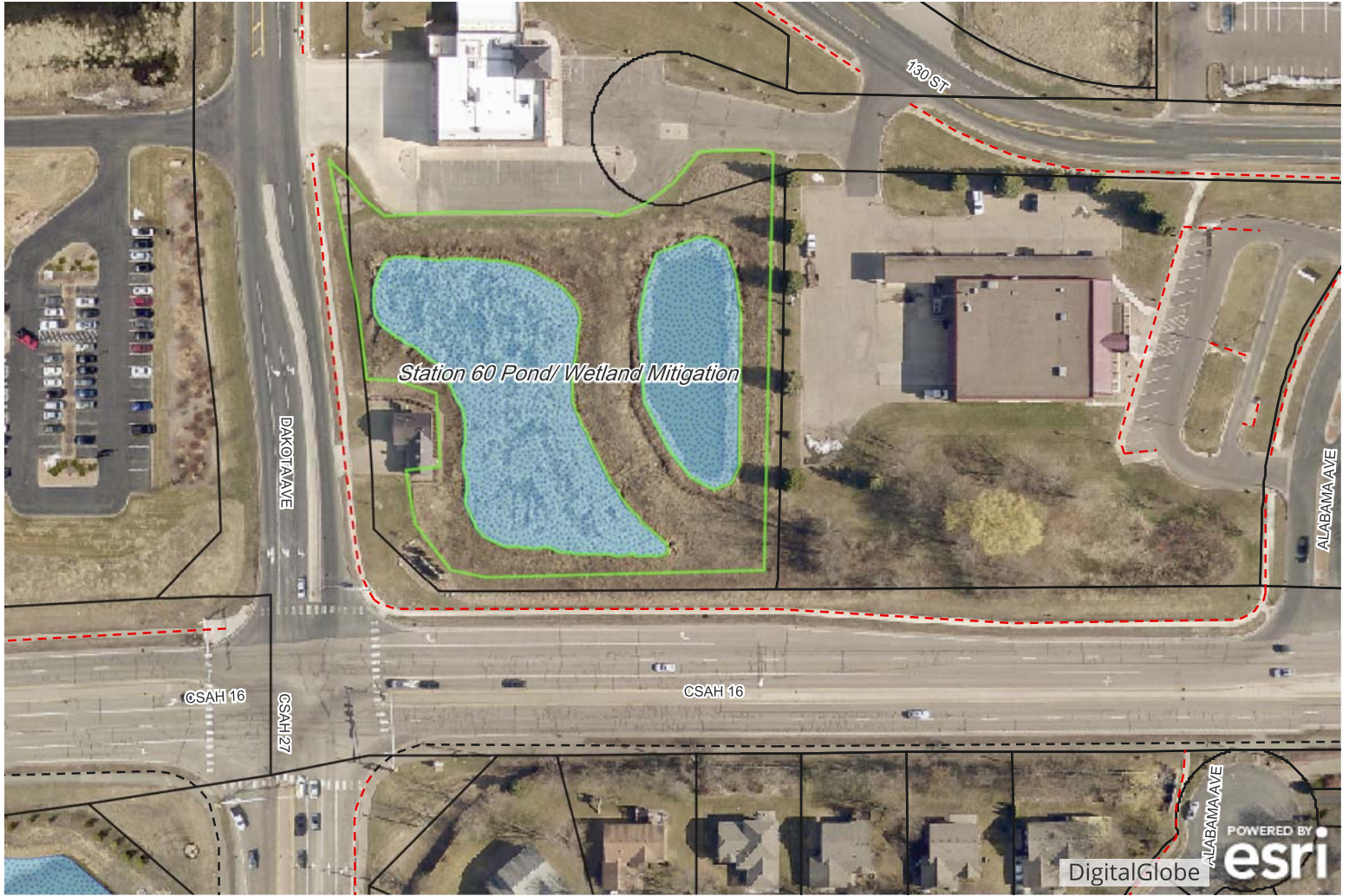
- AES
- Tall Grass Prairie
- 0.38 Acres
- **Condition-** Evidence of native tall grass species. Need 1-2 more years before full establishment is achieved.
- **Funding-** Parks

City Hall Pond



- AES
- Storm pond buffer prairie
- 0.56
- Condition-
- Funding- Storm Water

Station 60 Wetland Mitigation/Pond Buffer (16-13)





Station 60 Wetland Mitigation/Pond Buffer- Aug. 2018

- AES
- Wetland Mitigation and Storm Pond Buffer
- 1.07 Acres
- **Condition-** Perimeter slopes have good native species coverage. Bottom slope near pond have mostly none native cattails with some woody encroachment.
- **Funding-** Storm Water

Public Works Wetland Buffer



- AES
- Restored wetland
- 0.32 Acres
- **Condition-**
- **Funding-** Parks

Hollywood Park Dry Ponds (15-26)





Hollywood Park Dry Pond (1)- Aug. 2018

- AES
- Dry Pond/ Infiltration Basin
- 0.56 Acres
- **Condition-** Good coverage of native species with moderate diversity.
- **Funding-** Parks

Hidden Valley Remnant Prairie (16-5)





North side of Hidden Valley Prairie- Aug, 2018

- GRG
- Remnant Prairie
- 3.05 Acres
- **Condition-** Good native species diversity and rare species. However, woody encroachment and 2 very weedy invasive species (Crown Vetch, Leafy Spurge) threatens diversity.
- **Funding-** Parks

Hidden Valley Park Rain Gardens (16-28)





Rain Garden- Aug. 2018

- GRG
- Rain Garden
- 0.11 Acres
- **Condition-** Small native species diversity. Plants are mostly native, just strong domination of Golden Rod coming in.
- **Funding-** Storm Water

Boudin's Acres Storm Pond Buffer (29-19)





Boudin's Acres Storm Pond Buffer- Aug. 2018

- GRG
- Storm Pond Buffer
- 0.27 Acres
- **Condition-** Berm between two ponds have good native species with moderate diversity. Woody encroachment and some invasive species on parking lot side.
- **Funding-** Storm Water

Boudin's Acres Park Western Slope Prairie (29-30)





Short Grass Prairie- Aug. 2018

- GRG
- Short Grass Prairie
- 0.14 Acres
- **Condition-** Prairie is almost completely taken over by Canada thistle. Heavy management needed to return any native diversity.
- **Funding-** Shared

Boudin's Acres Eastern Slope Prairie (29-29)





Prairie on Western Slope- Aug. 2018

- GRG
- Short Grass Prairie
- 0.70 Acres
- **Condition-** Moderate mix of native species, not a very strong presence of invasive species. The most weedy plant is Golden Rod.
- **Funding-** Parks

McCann Park Storm Pond Buffer (29-22)

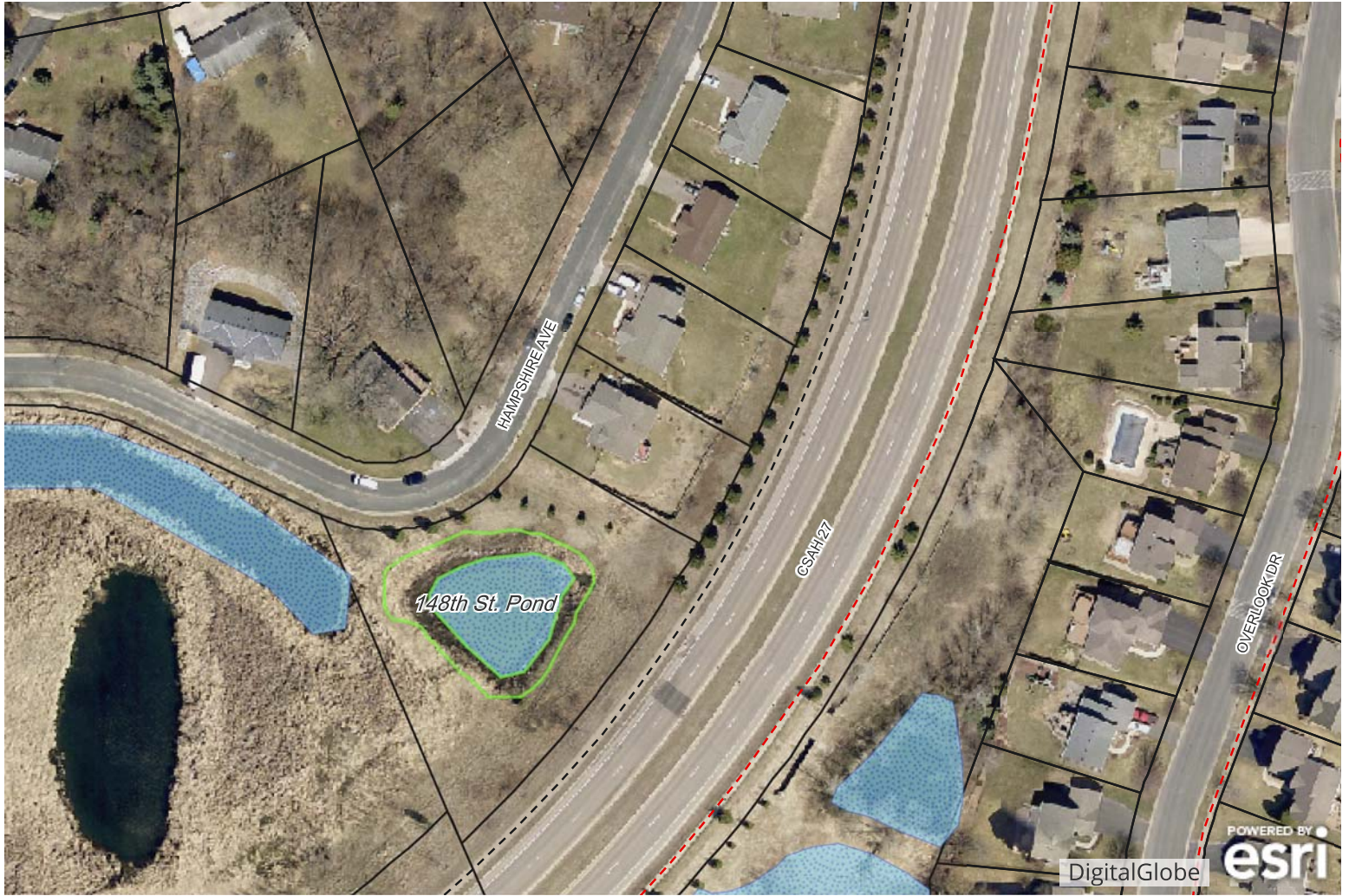




McCann Park Storm Pond- Aug. 2018

- GRG
- Storm Pond Buffer
- 0.12 Acres
- **Condition-** Although the buffer is smaller, there is still a great diversity of native species, that bloom throughout the growing season. Very attractive all growing season long. There are 3 willow trees and a small encroachment of crown vetch.
- **Funding-** Storm Water

148th St. Pond



- GRG
- Storm pond buffer prairie
- 0.17 Acres
- **Condition-**
- **Funding-** Storm Water

154th St. Storm Pond Buffer (32-24)





Storm Pond Buffer- Aug. 2018

- GRG
- Storm Pond Buffer
- 0.22 Acres
- **Condition-** Near pond edge and 154th St. there is a higher presence of invasive species, and heavy willow encroachment. However, northern side of buffer there is a more productive tall grass prairie with greater native diversity.
- **Funding-** Storm Water

Glendale Pond Buffer (22-6)





Storm Pond Buffer- Aug. 2018

- Vendor- N/A, Managed in the past
- Storm Pond Buffer
- 0.33 Acres
- **Condition-** Very high diversity of native species throughout the whole buffer. During the whole growing season there is flowering plants and late summer grasses.
- **Funding-** Not funded

Community Park Prairie (20-1)

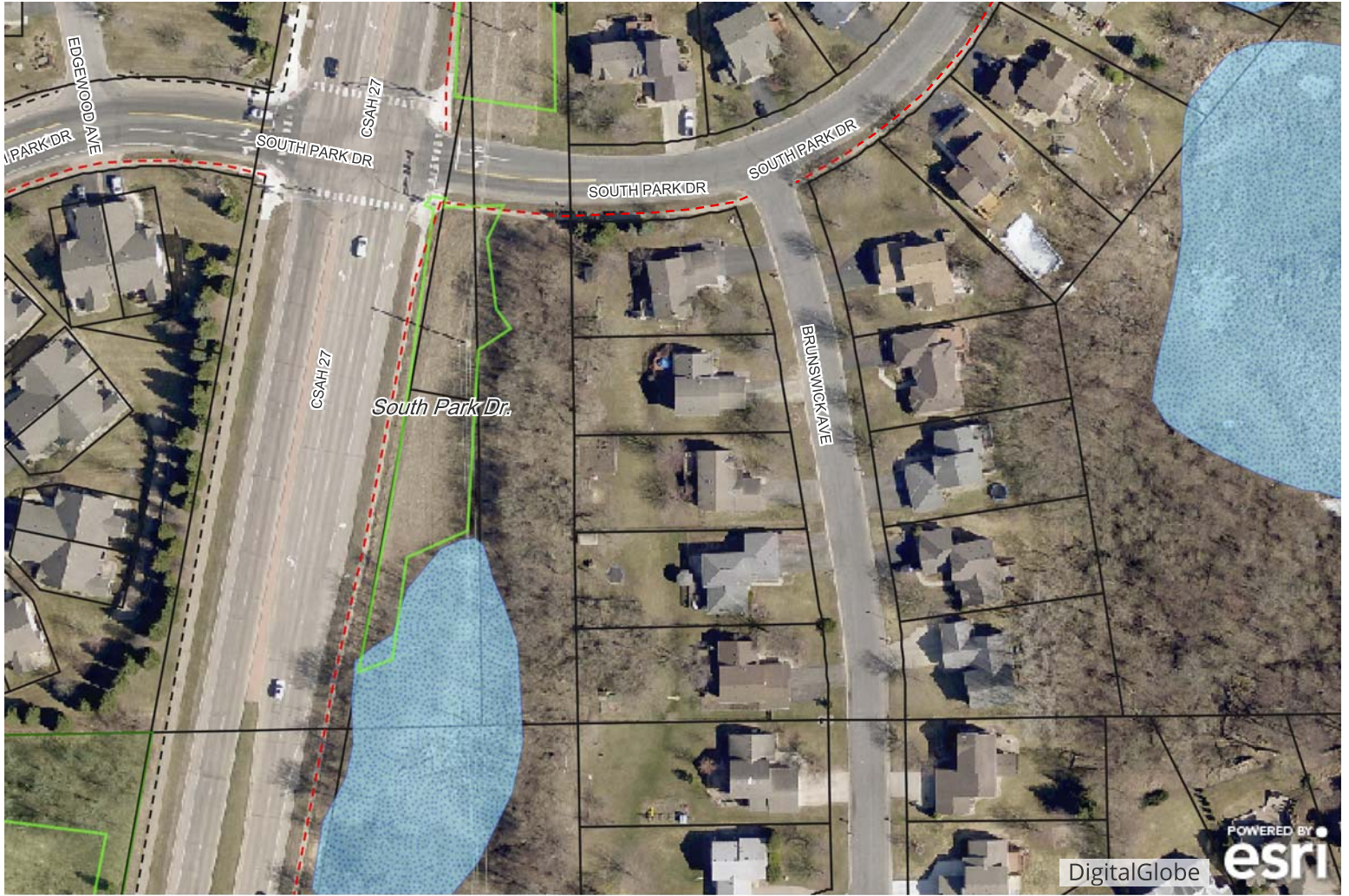




Dry Prairie- Aug. 2018

- PRI
- Dry Prairie
- 2.65 Acres
- **Condition-** A very good variety of native species with very little encroachment of invasive spaces. There is some encroachment of sumac. Finding some earlier and later season blooming wildflowers would be very beneficial.
- **Funding-** Parks

Outlot A, Dufferin Park Prairie (29-2)





Dry and Wet Meadow Prairie- Aug. 2018

- PRI
- Dry and Wet Meadow Prairie
- 0.74 Acres
- **Condition-** Moderate level of native diversity. There is some invasive encroachment near storm pond with woody encroachment as well.
- **Funding-** Parks

O'Connell Park Prairie (28-9)





O'Connell Park tall grass/mesic Prairie- Aug. 2018

- PRI
- Tall grass/mesic prairie
- 0.87
- **Condition-** Moderate native species diversity. Serves as an appealing buffer between forested pond buffer and walkway. There is some encroachment of sumac and invasive species such as giant ragweed.
- **Funding-** Parks

Summit Pointe Park Prairie (19-16)

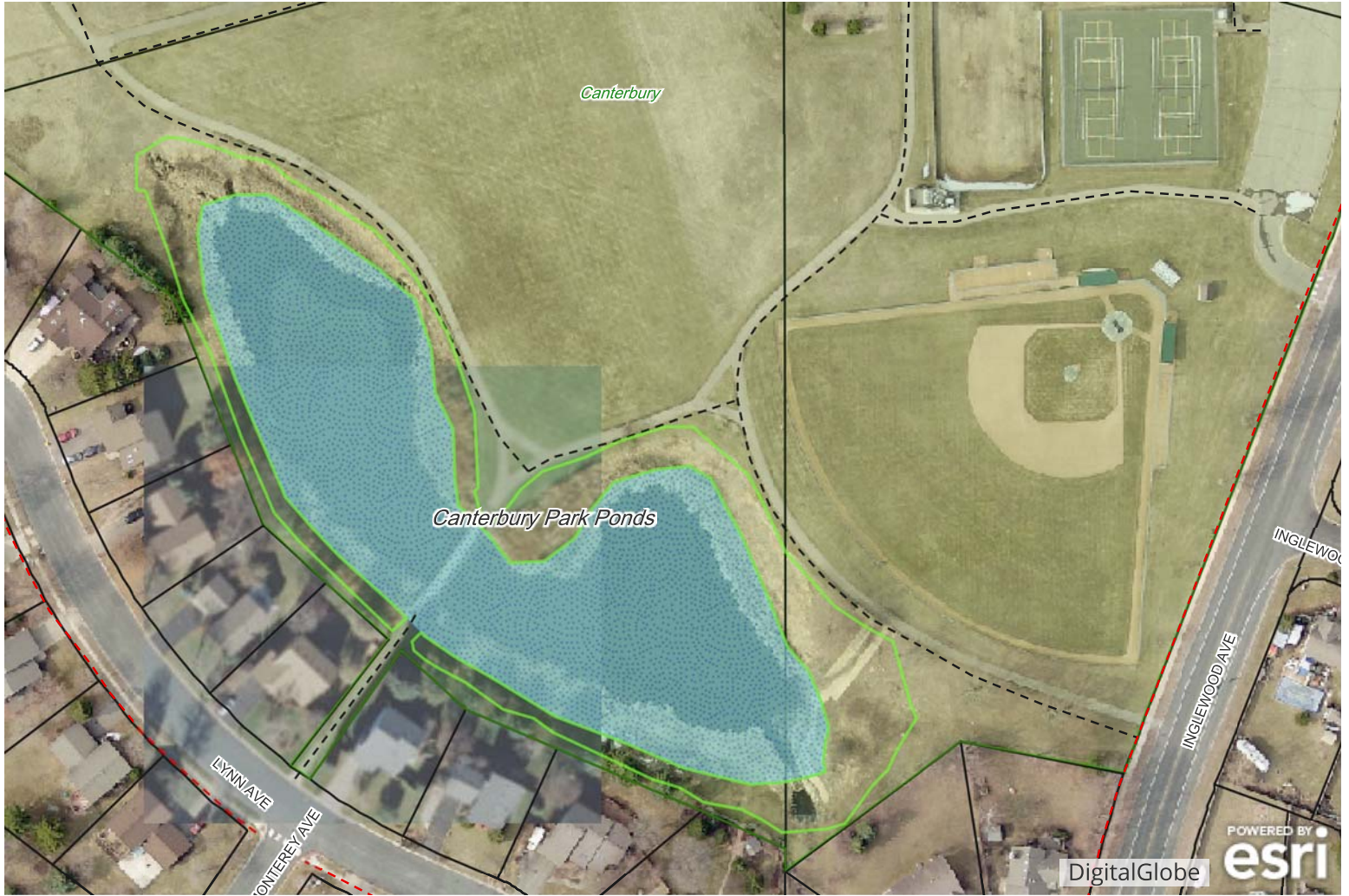




Summit Point Park Prairie- Aug. 2018

- PRI
- Short and tall grass prairie
- 3.04 Acres
- **Condition-** Good native species diversity with little invasive encroachment. Some larger areas of sumac offer good habitat, but otherwise could be managed to return area back into prairie.
- **Funding-** Parks

Canterbury Park Pond buffers (22-25)





Canterbury Park Pond Buffers- Aug. 2018

- PRI
- Storm pond buffer
- 1.00 Acres
- **Condition-** There is a moderate diversity of native species and flowering wildflowers in early and mid growing season. More later flowering species would be beneficial. There are some smaller spots of invasive species encroachment as well as woody species.
- **Funding-** Storm Water

Heatherton Ridge Park Outlot



- PRI
- Dry prairie
- 0.60 Acres
- **Condition-**
- **Funding-** Parks

EC Business Park



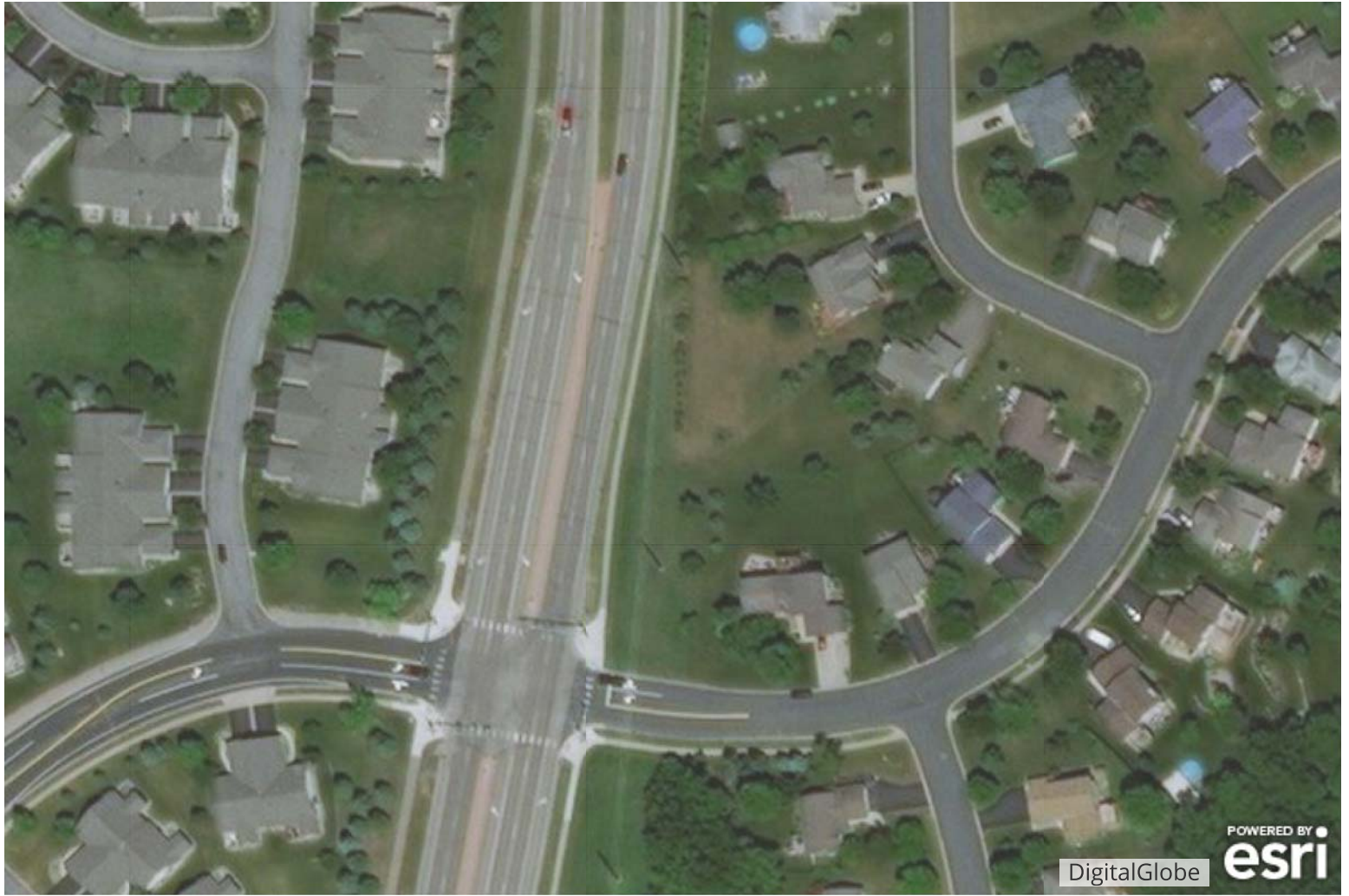
- PRI
- Short Grass Native Remnant
- 18.74 Acres
- **Conditions-**
- **Funding-** Parks

Woodhill Park



- PRI
- Tall Grass Prairie
- 1.73 Acres
- **Condition-**
- **Funding-** Parks

South Park Dr.



- PRI
- Tall Grass Prairie
- 0.83 Acres
- **Condition-**
- **Funding-** Parks

Public Works Wetland



- PRI
- Wetland/ Tall-Mesic Prairie
- 0.68 Acres
- **Condition-**
- **Funding-** Parks

Summit Pointe Park (Pond Buffer)



- PRI
- Storm pond buffer prairie
- 2.33 Acres
- **Condition-**
- **Funding-** Storm Water

Schroeders Acres Pond



- PRI
- Storm pond buffer prairie
- 1.48 Acres
- **Condition-**
- **Funding-** Storm Water