

Building Community Capacity and Resilience WITH Affordable Housing Stakeholders





Participatory Landscape Design Process



Engaging & Empowering Residents



Resident project stewards are a valuable component of success. Goal to foster grassroots leadership and increase agency among residents as part of engagement and stewardship strategy



Stewards and staff at resident picnic



Stewards and staff review landscape design

Resident Meetings



*Building trust between partners, tenants and property managers, facilitating conversations
and co-creating a shared vision of a healthier environment*



Leadership Training



Project stewards participate in leadership training focused on equitable engagement and environmental justice. Project stewards take a leadership role in their community.

Facilitated by local groups with established relationships in the community (ACER, etc.).

Stewards commit to leading engagement of fellow residents and receive compensation for each engagement event they assist with.





Clean Water Picnics



Resident project stewards lead engagement activities at clean water picnics to share information about resilient landscapes, activate underutilized outdoor spaces, and gather feedback for landscape design.





Project Steward in Action



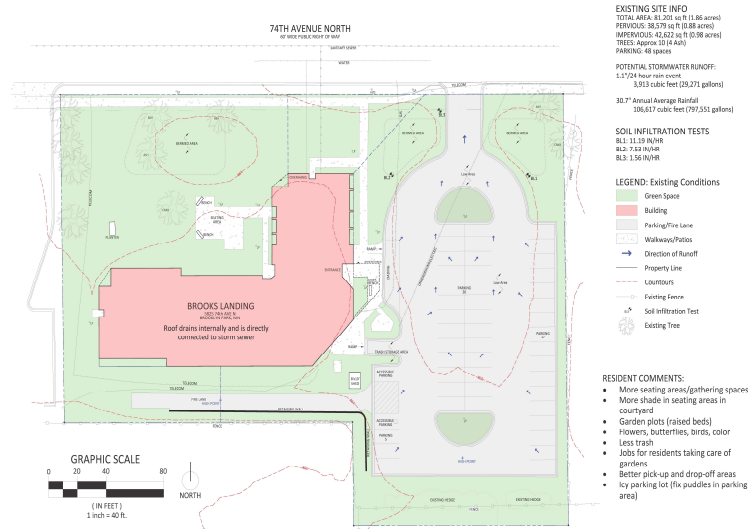
Donna Adigwe, speaking with neighbor about project at Autumn Ridge Resident Picnic in 2017

“I have been involved with this project since its initiation. I did a lot of door knocking and flyering to promote the project to neighbors as well as attended the resident meetings and workshops to keep up with the project and other programs. There is definitely a change in attitude and behavior about the environment”

Emerging Themes + Landscape Design

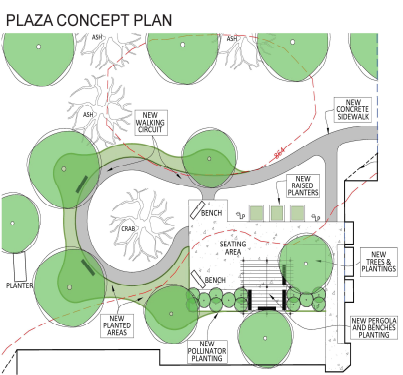
Identify emerging themes and design priorities from resident input. Integrate proposed outdoor amenities and resilient landscapes with stakeholder priorities and existing historical, cultural, geographic and environmental site relationships. Continually incorporate feedback from residents and property management.

BROOKS LANDING APARTMENTS EXISTING CONDITIONS PLAN



Existing Conditions

BROOKS LANDING APARTMENTS PLAZA CONCEPT PLAN



COMMUNITY ENGAGEMENT



Thank you, participants for your advice & feedback!

COMMUNITY PLAZA



Multi Phase Concept Design



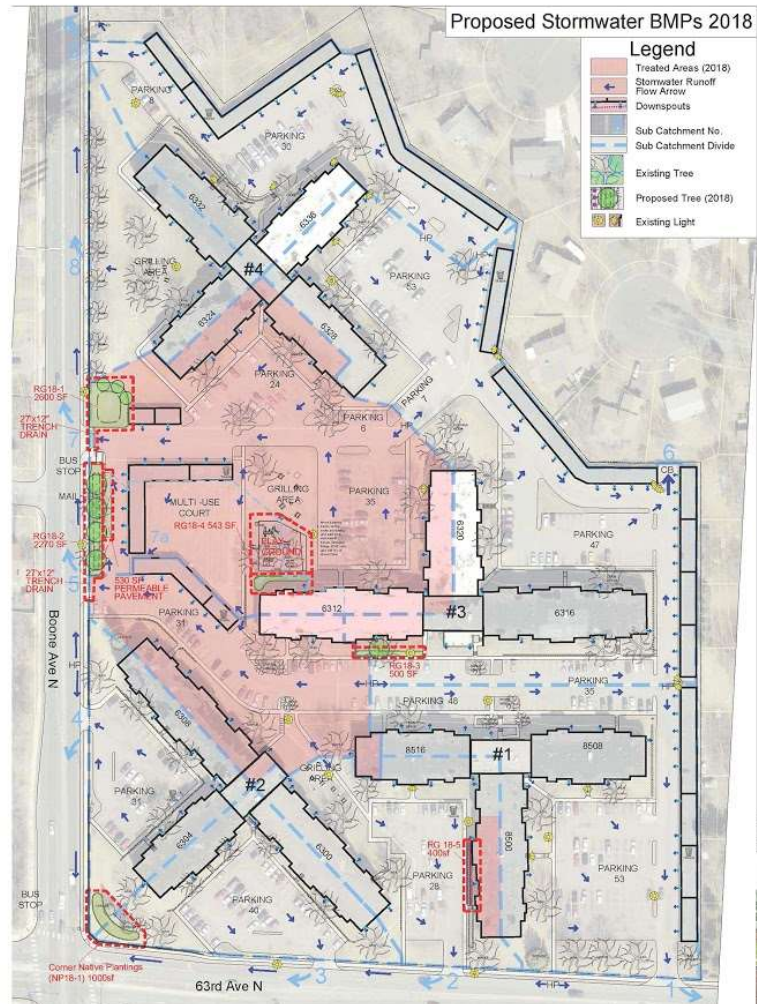
Bus Stop Entrance - Raingarden 1/Trench Drain



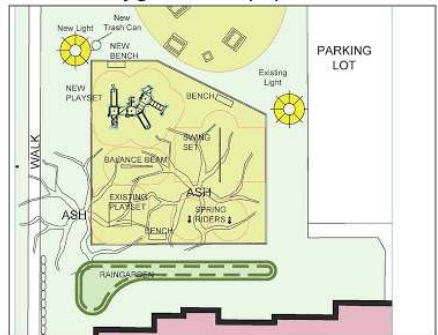
Mail Box Area - Raingarden 2 / Bench



Erosion Areas - Raingarden 3



New Playground Equipment



Reconfigured Playground

Pollution Reduction from 2018 Projects

Treated Areas - 4.47 acres
 Captured Runoff* - 2.67 Million Gallons
 Captured Total Solids* - 4,418 Pounds
 Captured Phosphorus* - 14.7 Pounds
 *Annual Precipitation of 31.44"

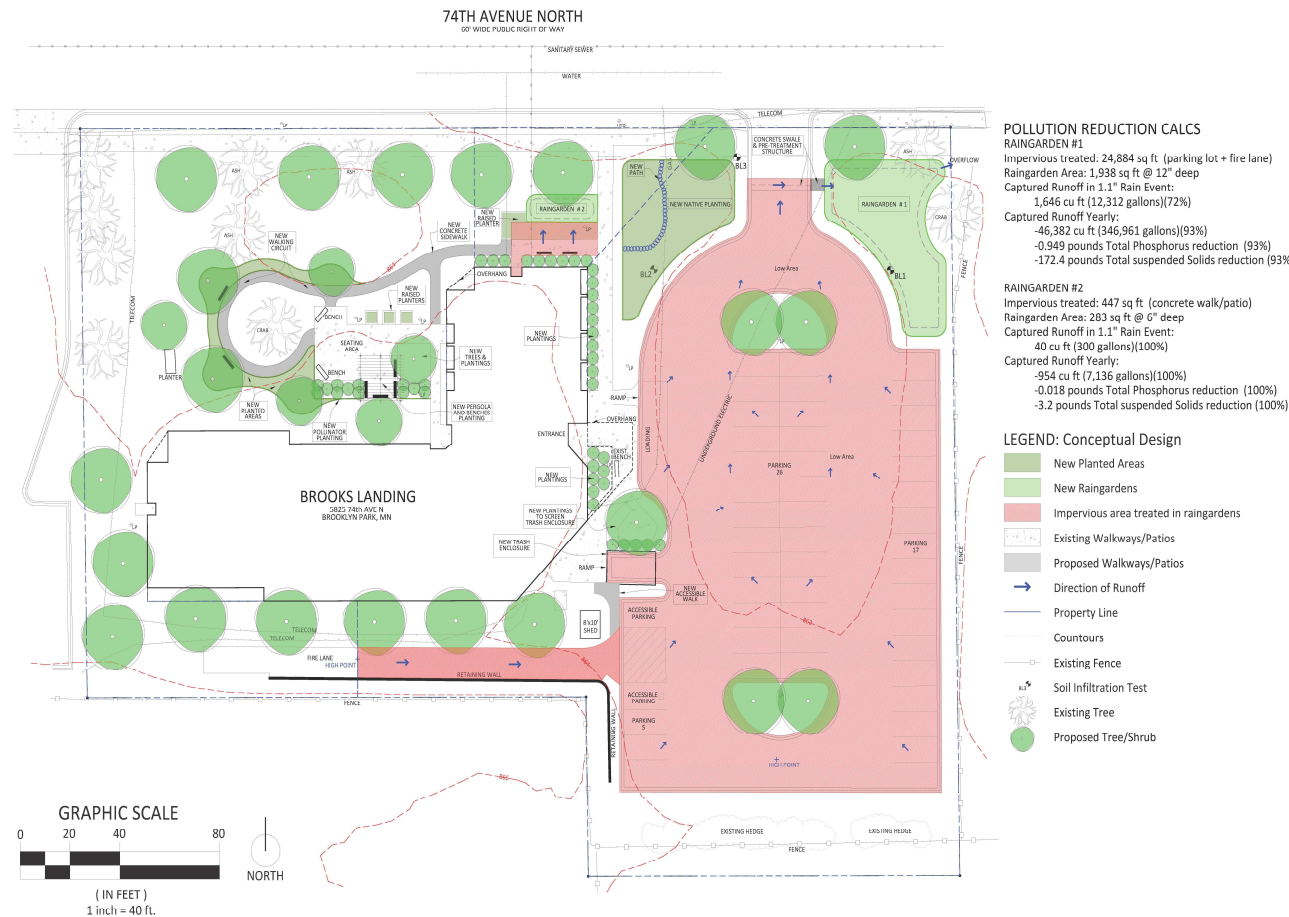
2018 Raingardens will capture 8 acre-feet of runoff in 1 year, enough stormwater to fill the Multi-Use Court Area to 30-feet!



Landscape Design

BROOKS LANDING APARTMENTS

FULL SITE CONCEPT PLAN



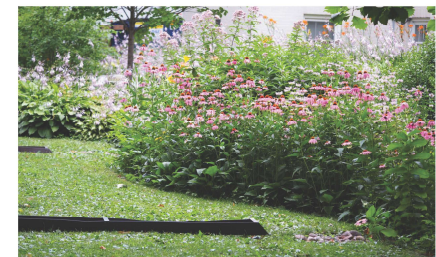
WHAT IS A RAINGARDEN?



A raingarden collects water from the street



Pretreatment structures filter rainwater runoff



Native plants provide food for pollinators

Implementation Funding Opportunities

- Hennepin County Natural Resources (sustainable landscape projects like raingardens, native plantings): **typically due in October**
- City of Brooklyn Park (livability projects like nature play, plantings, walking paths, pergolas, benches): **spring and fall deadlines**
- Shingle Creek Watershed (clean water projects like raingardens, permeable pavement): **rolling deadline**
- Lawns to Legumes (native plantings, trees and shrubs): **Due in February, Brooklyn Park and Metro Blooms are applying to support multi family housing projects like Strawberry Commons to start a small project!**
- Hennepin County Healthy Tree Canopy (ash tree removal and tree planting): **due in June**

Resident Plantings



Sustainable Landcare Training



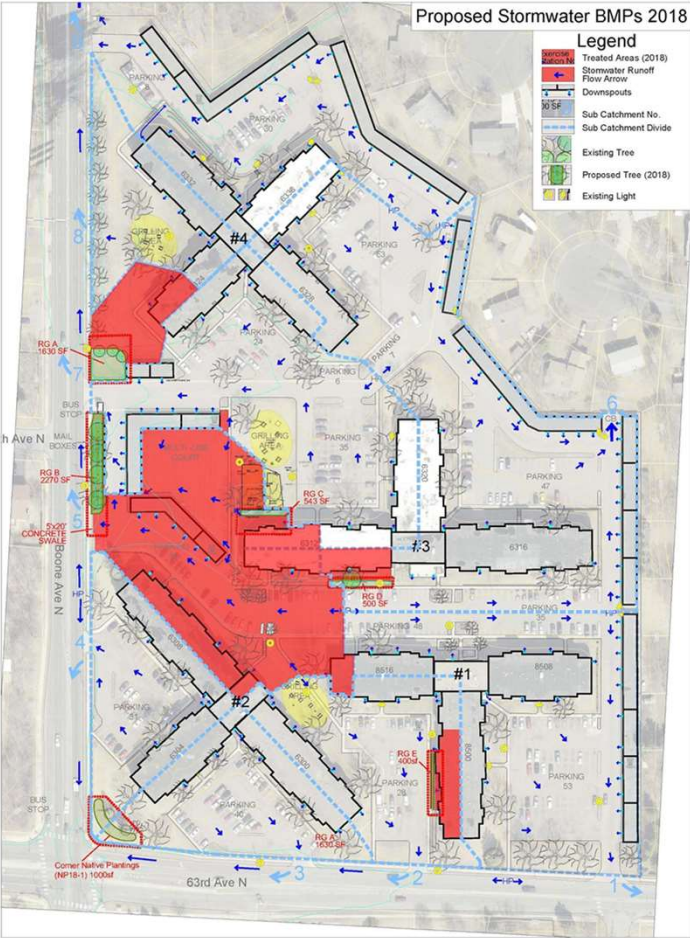
Following installation, residents, caretakers and property management participate in sustainable landcare training to ensure the knowledge to care for the practices lives with the community. Opportunities for continued involvement of project stewards and community.



Example Projects



Project Wrap Up



As-Builts Stormwater Capture



AUTUMN RIDGE STORMWATER MODELING - PHASE I (2018) TOTALS

TOTALS			
Areas Treated	Sq-Ft	Acre	
Total Impervious	54831	3.09	63.06%
Total Pervious	32881	1.81	36.94%
Total	87712	4.90	

TOTALS 2.93 Acre Feet			
31.44" Annual Rainfall			
	Runoff Cu Ft	Soilds lbs	Po lbs
Before	203234	2544.28	9.2289
After	75735	951.92	3.3304
Captured	127499	1592.36	5.8985
%reduct	62.74%	62.59%	63.91%
	953758.82 gallons		

Autumn Ridge
8516 63rd Avenue, Brooklyn Park MN 55428

Stormwater Management Plan
2018 Improvements



Designer: Rich Harrison
Date: November 28, 2017





What We are Hearing



Nelima and Hamza of ACER planting with Kim of Metro Blooms

Hamza Hassan (center)
Community Engagement and Outreach -ACER

“Environmental racism is a real thing and it affects people of color disproportionately. However, this project reaches this group of people and partners with them to make their living quarters ‘better’ which is something a lot of environmental work doesn’t touch on typically”

What We are Hearing



Dube, his daughter, and granddaughter at planting event (Riverside Plaza)

**Dube (center)
Project Steward at Riverside Plaza**

“There has not been a lot of beautiful greenery in a community that I have lived in for a long time. It brings people together; and I used to do this in Africa. I forgot a little but now it’s like getting used to doing something you love but in a new place”



What We are Hearing



Tom (Caretaker at Autumn Ridge Apartments)

“I definitely see a difference in the relationship between management and Sherman Associates. Not only has there been a change in the relationship between residents and management, but the residents’ view of the property has changed and there is somehow more ‘care’ to the outdoor spaces which wasn’t there before.”

More Information



Laura Scholl
Associate Director, Metro Blooms
laura@metroblooms.org

Erika Schlaeger dos Santos
Director Community Relations, Metro Blooms
erika@metroblooms.org

Rich Harrison
Landscape Architect, RLA, Metro Blooms
rich@metroblooms.org