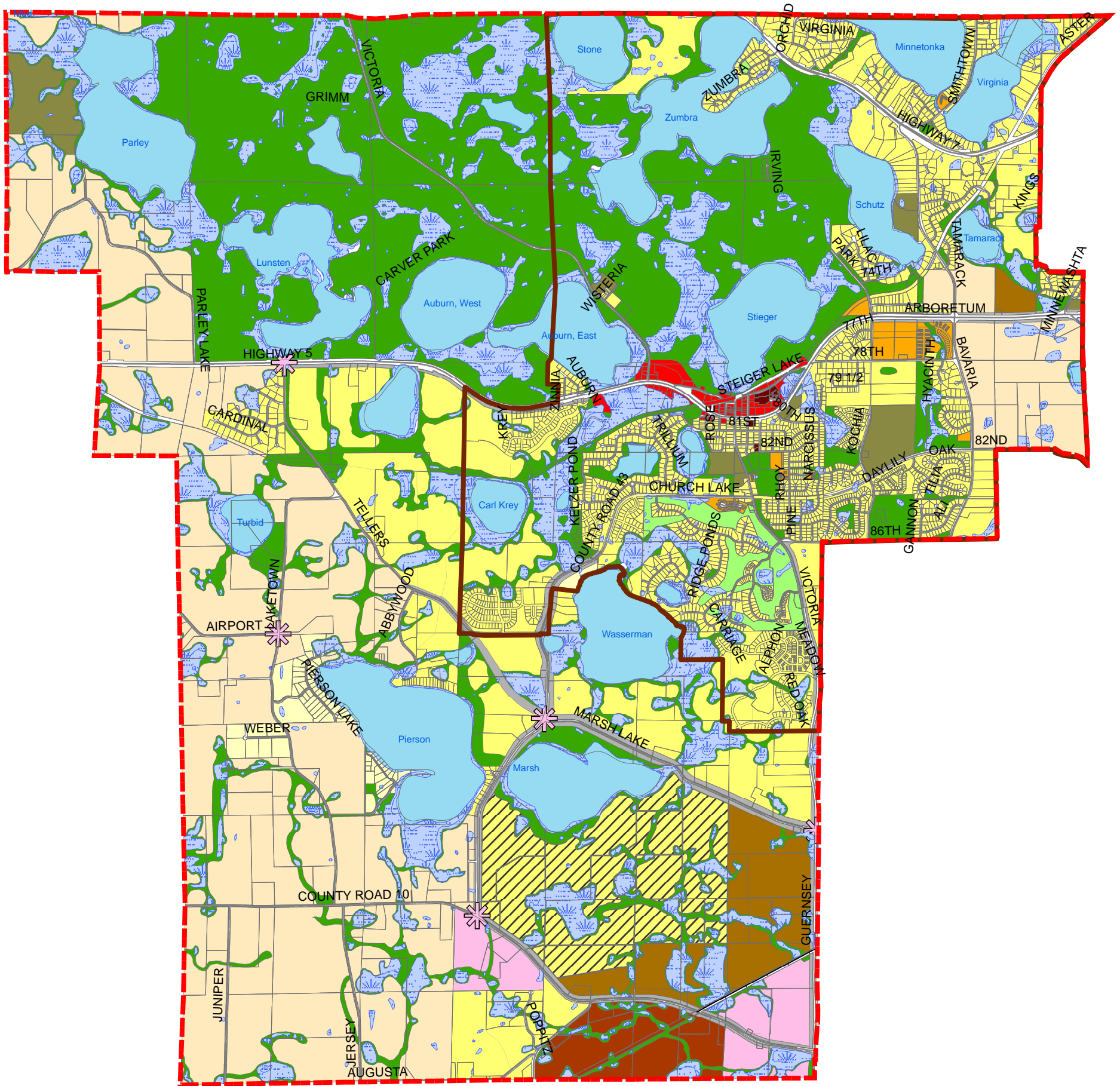




# 2030 Future Land Use

City of Victoria 2030 Comprehensive Plan Update

## Exhibit 7



### Land Use

- |                   |   |  |
|-------------------|---|--|
| Ultimate Boundary | Agriculture (1 unit/40 acres)                                 | Commercial/High Density Residential (16 - 24 units/acre) |
| Victoria          | Very Low - Rural Residential (1 unit/10 acres)                | Business Park/Corporate Campus                           |
| Parcels           | Low - Single Family Residential (1.5 - 5.9 units/acre)        | Light Industrial   |
| Lakes             | Low - Conservancy PUD (1.5 - 5.9 units/acre)                  | Parks and Open Space                                     |
| Wetlands          | Mixed Residential - Detached & Attached (3 - 11.9 units/acre) | Parks and Open Space- Private                            |
| Commercial Node   | Medium - Townhouses (6 - 11.9 units/acre)                     | Public and Semi Public                                   |
|                   | Downtown Commercial (11 - 22 units/acre)                      | Right of Way   |
|                   | High - Apartments (16 - 24 units/acre)                        |  |

